

Topsan Manifold







Certificate No.
1507073



Product Features

A range of WRAS approved nickel plated, extruded brass manifolds with 3/4" and 1" inlet connection. Wheelhead isolation valves are fitted to each outlet with red and blue labels supplied for easy identification of each outlet. TopSan is supplied in single rails for flexibility when mounting using our slider rail system. This enables the rails to be mounted either offset above one another or side by side. TopSan can also be mounted in the 'Termobox' plastic manifold cabinet which has the slider rail system moulded in and needs only the slider rail brackets. Also available are ball valves, mounting brackets, fittings and WRAS approved Monoblocco pipe connectors for a wide range of pipe types and sizes.

Features and Benefits

-  The Topsan manifold provides you with individual isolation of outlets and appliances if required. Enabling you to isolate parts of the system whilst the rest remains operational, reducing disruption for installation and maintenance.
-  Red and Blue outlet identification labels are supplied which can be marked to indicate which room or zone they are serving.
-  Supplied as single rails for flexibility in mounting and installation requirements, using our slider rail system, this enables the rails to be mounted either offset above one another or side by side. Topsan can also be mounted in the 'Termobox' plastic manifold cabinet which has the slider rail system moulded in and needs only the slider rail brackets.
-  Pipe connections using Emmeti patented Monoblocco fittings supports a wide range of pipes including Copper, MLCP, PB and PE-X.



Technical Data Sheet

Topsan Manifold

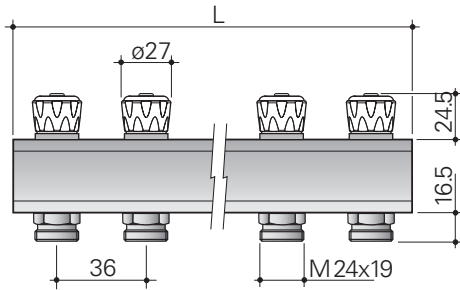
Specification

Inlet connection 3/4" and 1"	3/4" and 1"
Outlet connections 24 x 19*	24 x 19*
Outlet centres 36mm	36mm
Ways	2 to 12 ways in 3/4" and 4, 5 and 6 ways in 1"
Extension	Yes, with coupling**
Individual isolating tap	Yes, each outlet
Identification of individual appliances	Red / Blue coding labels supplied
Maximum operating pressure:	10 bar
Maximum operating temperature:	110 °C

*Monoblocco connectors are available to suit pipe sizes 10 - 20mm and pipe types (PB, PE-Xa, PE-RT, MLCP, & copper)

**Consider pressure drop and flow rate if going above 12 ways

Dimensions



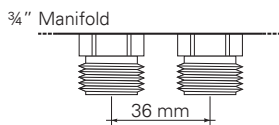
Type	2 ways	3 ways	4 ways	5 ways	6 ways	7 ways	8 ways	9 ways	10 ways	11 ways	12 ways	
3/4"	L mm	85	121	157	193	229	265	301	337	373	409	445

Note: distance between takeoffs is 36 mm

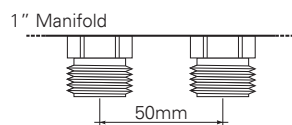
TopSan manifold with isolating taps



Certificate No.
1507073



Distance between takeoffs : 36mm



Distance between takeoffs : 50mm

Description	Ways	Pcs/Pack	Code
3/4"	2	1	01282050
3/4"	3	1	01282052
3/4"	4	1	01282054
3/4"	5	1	01282056
3/4"	6	1	01282058
3/4"	7	1	01282060
3/4"	8	1	01282062
3/4"	9	1	01282064
3/4"	10	1	01282066
3/4"	11	1	01282068
3/4"	12	1	01282070
1"	4	1	01282084
1"	5	1	01282086
1"	6	1	01282088

For Copper, MultiLayer, PEX, PP, PB pipe.

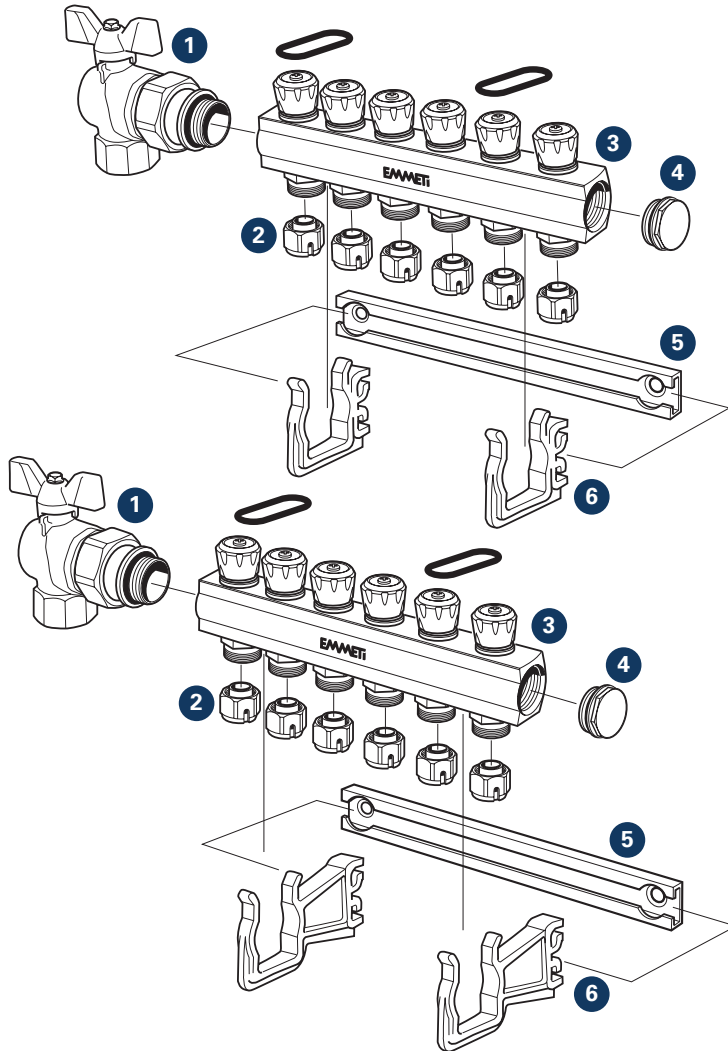
Please order two rails, one rail for hot and one for cold supply. Separate blue and red outlet identification labels are shipped with each order. These labels are applied by the installer on site. For 36mm interaxial spacing a 27mm spanner is required, code: 01306058 or 01306054.

For WRAS approved MLCP (MultiLayer Composite Pipe), Emmeti Monoblocco connectors, plastic or metal mounting brackets, blanking plugs and ball valves please refer to the relevant pages in our buyers guide.



Topsan Manifold

TopSan manifold assembly



- 1 Ball Valves**
A range of 3/4" and 1" Ball Valves are available. For the complete range please refer section system components in our buyers guide our or visit our website www.emmeti.co.uk
- 2 Monoblocco Connectors**
A range of Monoblocco connectors are available to suit pipe sizes 10mm - 20mm, and different pipe types PB, PE-X, PE-RT, MLCP and Copper. For the complete range, please refer to the relevant pages in our buyers guide or visit our website www.emmeti.co.uk
- 3 Manifold**
Code 01282050 (2way) to 012822070 (12 way) 3/4"
Code 01282084 (4 way) to 01282088 (6 way) 1"
- 4 Blanking Plug**
Code 90004820 3/4" M with O-ring seal
Code 90004830 1" M with O-ring seal
- 5 Aluminum Slider Rail**
Order two per manifold or one 400mm slider rail as this can be snapped into two 200mm lengths by hand.
Code 01306400 400mm or
Code 01306398 200mm.
- 6 Brackets**
Code 01302120 3/4" Plastic Bracket Supports
Code 01302130 1" Plastic Bracket Supports
Sold in boxes of 10 pairs.

Additional Bracket Options

Single Metal Brackets

(Sold in pairs)
Code 90011500 - 3/4"
Code 90011510 - 1"

Double Metal Brackets

(Sold in pairs)
Code 90011530 - 3/4" 200mm centres
Code 90011540 1" 200mm centres

