

Modulo Plus

Motor driven ball-valve

IP 55



IP 50



Valve technical data

Valve body made brass ST UNI EN 12165 CW617N with nickel finish
Ball made brass ST UNI EN 12165 CW617N chromium plated
Operating temperature range from -40 to 100 °C (circulating fluid)
Operating pressure PN 40
Maximum differential pressure 6 bar
Seals PTFE
Fittings for operating rod HNBR

Note: in the 3-way type is granted the flow port during the running operations.

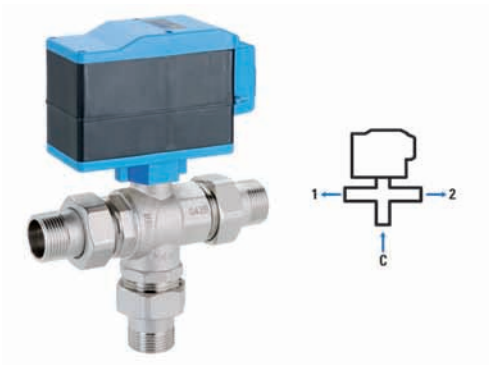
Servomotor technical data

Power supply 230 V / 50 Hz
Absorption 4 VA
Rotation angle 90° (2 ways) - 180° (3 ways)
Rotation time 60" (2 ways) - 120" (3 ways)
Maximum torque 28 Nm (230 V)
Auxiliary contact 1-free 6 A / 230 V (on-off)
Protection class IP 55 IP 50
Insulating class: II
Indicator open valve (2 ways) diverted flux c-sx c-dx (3 ways)



Modulo Plus 230 Vac 2 ways with pipe union connection with thread

Size	Ways	Pcs. pack	Code
1"1/4	2	1	01425700
1"1/2	2	1	01425702
2"	2	1	01425704



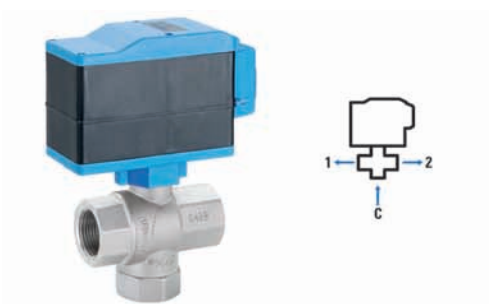
Modulo Plus 230 Vac three ways diverter with pipe union connection with thread

Size	Ways	Pcs. pack	Code
1"1/4	3	1	01425710
1"1/2	3	1	01425712
2"	3	1	01425714



Modulo Plus 230 Vac 2 ways, Female Female thread

Size	Ways	Pcs. pack	Code
1"1/4	2	1	01425730
1"1/2	2	1	01425732
2"	2	1	01425734



Modulo Plus 230 Vac 3 ways diverter, Female Female thread

Size	Ways	Pcs. pack	Code
1"1/4	3	1	01425740
1"1/2	3	1	01425742
2"	3	1	01425744



Servomotor for motorised ball valve Modulo Plus

Size	Pcs. pack	Code
2 ways - 230 Vac	1	01420170
3 ways - 230 Vac	1	01420172



Body for Modulo 2 ways with pipe union connection with thread

Size	Ways	Pcs. pack	Code
1/2" (*)	2	1	90021400
3/4" (*)	2	1	90021410
1" (*)	2	1	90021420
1"1/4 (**)	2	1	90021430
1"1/2 (**)	2	1	90021440
2" (**)	2	1	90021450

(*) Recommended for Modulo Compact - (**) Recommended for Modulo Plus



Body for Modulo 3 ways with pipe union connection with thread

Size	Ways	Pcs. pack	Code
1/2" (*)	3	1	90021320
3/4" (*)	3	1	90021460
1" (*)	3	1	90021470
1"1/4 (**)	3	1	90021480
1"1/2 (**)	3	1	90021490
2" (**)	3	1	90021500

(*) Recommended for Modulo Compact - (**) Recommended for Modulo Plus



Body for Modulo 2 ways Female Female thread

Size	Ways	Pcs. pack	Code
1/2" (*)	2	1	90021200
3/4" (*)	2	1	90021210
1" (*)	2	1	90021220
1"1/4 (**)	2	1	90021230
1"1/2 (**)	2	1	90021240
2" (**)	2	1	90021250

(*) Recommended for Modulo Compact - (**) Recommended for Modulo Plus



Body for Modulo 3 ways Female Female thread

Size	Ways	Pcs. pack	Code
1/2" (*)	3	1	90021310
3/4" (*)	3	1	90021260
1" (*)	3	1	90021270
1"1/4 (**)	3	1	90021280
1"1/2 (**)	3	1	90021290
2" (**)	3	1	90021300

(*) Recommended for Modulo Compact - (**) Recommended for Modulo Plus



Body for Modulo Compact 4 ways 49÷61 mm / 53÷65 mm centers for by-pass

Size	Pcs. pack	Code
3/4" (*)	1	90021950
1" (**)	1	90021960

(*) for Mixer manifold 49÷61 mm centers - (**) for Mixer manifold 53÷65 mm centers
NB. Do not used with Modulo Plus



Body for Modulo Compact 4 ways 190-210 mm centers for by-pass

Size	Pcs. pack	Code
3/4" for Topway manifold	1	90021970
1" for Topway manifold	1	90021980

NB. Do not used with Modulo Plus

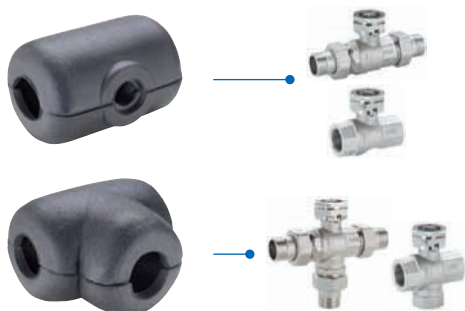


Body for Modulo Compact 4 ways 90-100 mm centers for by-pass for installation in Termobox box

Size	Pcs. pack	Code
3/4"	1	90021990
1" for Topway manifold (*)	1	90022000

(*) Impossible to use in Termobox with Modular / Multiplex manifolds.

NB. Do not used with Modulo Plus



Insulating shells for Modulo ball valves

Size	Pcs. pack	Code
Insulating shell for ball valve 2 ways 1/2"	1	90045150
Insulating shell for ball valve 2 ways 3/4"	1	90045160
Insulating shell for ball valve 2 ways 1"	1	90045170
Insulating shell for ball valve 2 ways 1" 1/4	1	90045180
Insulating shell for ball valve 2 ways 1" 1/2	1	90045190
Insulating shell for ball valve 2 ways 2"	1	90045200
Insulating shell for ball valve 3 ways 1/2"	1	90045210
Insulating shell for ball valve 3 ways 3/4"	1	90045220
Insulating shell for ball valve 3 ways 1"	1	90045230
Insulating shell for ball valve 3 ways 1" 1/4	1	90045240
Insulating shell for ball valve 3 ways 1" 1/2	1	90045250
Insulating shell for ball valve 3 ways 2"	1	90045260

In close-cell expanded polyethylene